



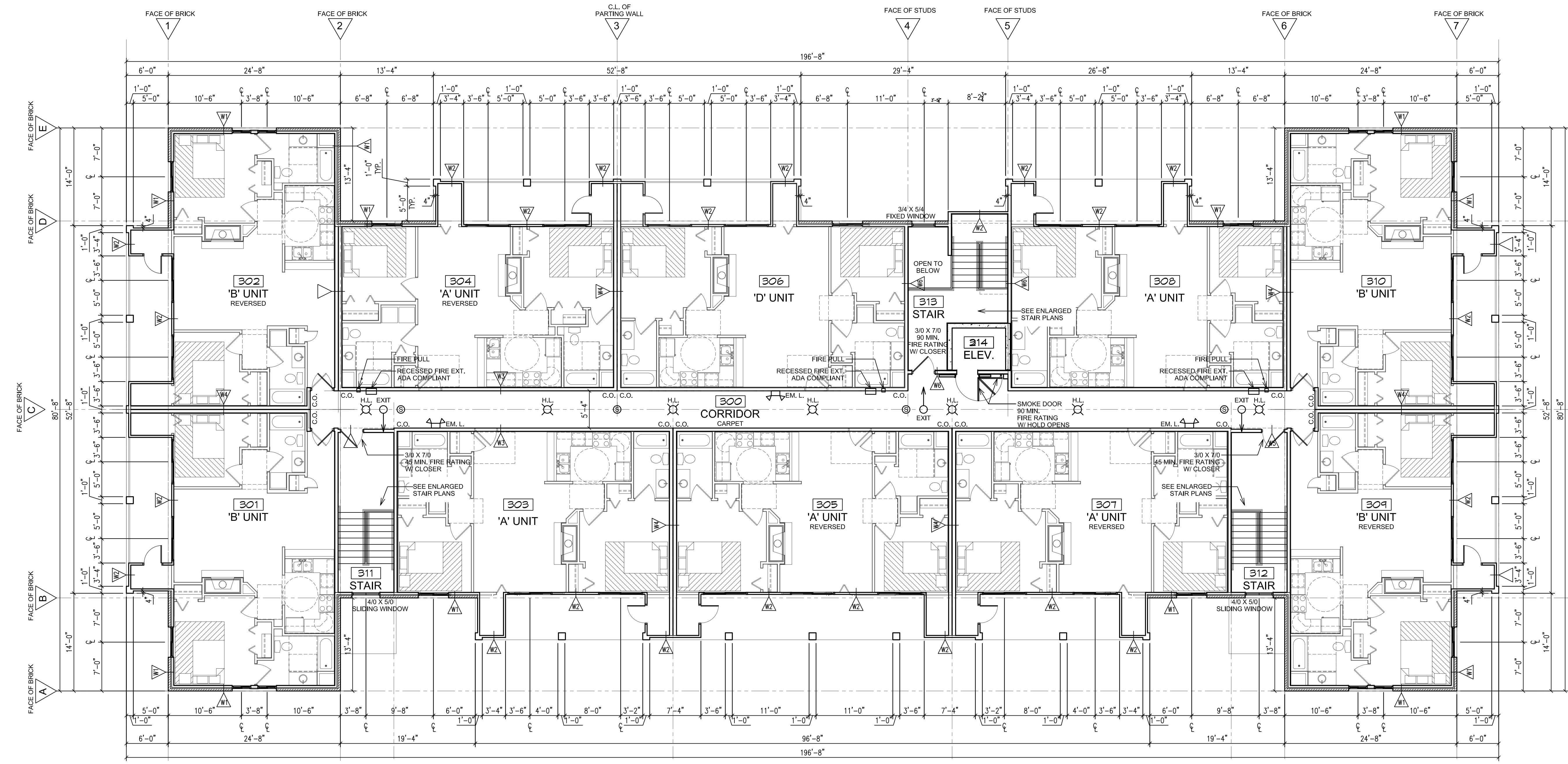
WELLS
+ associates

Wells + Associates hold all rights of copyright in and to these prints, drawings & documents.

No reproduction, copying, alteration, modification, usage, incorporation into other documents, or assignment of the same may occur without the prior written permission of:

Wells + Associates.
Copyright 2010
Wells + Associates

- GENERAL NOTES:**
- ALL CONSTRUCTION IS INTENDED TO BE IN ACCORD WITH FEDERAL AND STATE LAWS, CURRENT LOCAL ORDINANCES & BUILDING CODES & THE AMERICANS WITH DISABILITIES ACT (ADA). REPORT ANY DISCREPANCIES TO THE ARCHITECT BEFORE PROCEEDING WITH THE WORK.
 - REFER TO WALL TYPES FOR ACTUAL WALL DIMENSIONS. OVERALL DIMENSIONS ARE TO FACE OF STUDS EXCEPT AT EXTERIOR MASONRY. ALL MASONRY DIMENSIONS ARE TO FACE OF BRICK UNLESS OTHERWISE NOTED.
 - GRID IS LOCATED AT OUTSIDE FACE OF SHEATHING U.N.O.
 - VERIFY REQUIREMENTS OF ALL OWNER FURNISHED ITEMS WITH OWNER BEFORE PROCEEDING WITH WORK.
 - ON WALLS ADJACENT TO APARTMENT SHOWER UNITS, RATED GYPSUM BOARD TO RUN CONTIGUOUS BEHIND THE SHOWER UNIT. PROVIDE SECOND LAYER OF GYPSUM BOARD TO COVER SHOWER UNIT FLANGES.
 - PROVIDE TWO (2) LAYERS OF 5/8" TYPE "X" GYP. BD. ON CEILINGS.
 - SEAL ALL PENETRATIONS THROUGH OCCUPANCY SEPARATION WALLS, AREA SEPARATION WALLS, AND SMOKE BARRIER WALLS WITH FIRE RATED SEALANT.
 - SEAL ALL PENETRATIONS DRAFT STOPS WITH CAULK. PROVIDE BACK-UP MATERIAL AT PERIMETER OF OPENINGS AS REQUIRED.
 - COORDINATE FIRE EXTINGUISHER CABINETS WITH CLEANOUTS, DOOR SPRINGS, & ALL OTHER REQ. CLEARANCES IN CORRIDORS. ALL FIRE EXTINGUISHER CABINETS ARE TO BE RECESSED & FIRE RATED.
 - SEE UNIT PLANS/ENLARGED PLANS FOR WALL TYPES WITHIN UNITS.
 - ALL CONDENSER PADS, PORCH SLABS & SIDEWALKS SHALL BE 4" THICK WITH 3/4" W/4XW1.4 WIRE MESH AND HAVE 12" DEEP EDGES. FINISH WITH LIGHT BROOM FINISH. PROVIDE 1/2" ASPHALT IMPREGNATED FIBER BD. W/ SEALANT BEAD AT TOP WHERE E.J. IS INDICATED.
 - VERIFY ALL REQUIRED ROUGH FRAMING DIMENSIONS FOR DOORS, WINDOWS, AND BUILT-IN ITEMS. COORDINATE DIMENSIONS WITH INSTALLATION OF SCHEDULED EQUIPMENT AND APPLIANCES.
 - PROVIDE WOOD BLOCKING AT ALL WALL MOUNTED MILLWORK, EQUIPMENT, DOOR STOPS, HANDRAILS, GUARDRAILS AND ACCESSORIES, UNLESS OTHERWISE NOTED.
 - DIMENSIONS PERTAINING TO MECHANICAL, ELECTRICAL, OR PLUMBING EQUIPMENT SHALL BE VERIFIED WITH RESPECTIVE TRADES. VERIFY EXACT DIMENSIONS WITH MANUFACTURER.
 - REFER TO WALL ASSEMBLIES FOR SPECIFIC CONSTRUCTION REQUIREMENTS TO MAINTAIN FIRE RATINGS.
 - COORDINATE DIMENSIONS BETWEEN ARCHITECTURAL, MECHANICAL AND ELECTRICAL ITEMS. NOTIFY ARCHITECT OF DISCREPANCIES FOR CLARIFICATION. COORDINATE ALL BUILT-IN ITEMS AND MECHANICAL/ELECTRICAL FIXTURES WITH ACTUAL DIMENSIONS AND ADJUST AS REQUIRED.
 - FURNITURE BY OWNER, UNLESS NOTED OTHERWISE.
 - FILL ALL EXISTING PLUMBING & ELECTRICAL ROUGH-INS IN THE GROUND LEVEL SLAB W/ FIRE-SEALANT OR DOWNELED-IN SOLID CONC. RE-DRILL NEW PLUMBING & ELEC. AS REQUIRED FOR NEW WORK. SEAL W/ A UL-LISTED FIRE-CAULKING.
 - WHERE UTILITIES PASS THROUGH A FIRE-RATED PARTITION, SEAL AROUND ALL PENETRATIONS W/ A UL-LISTED FIRE CAULKING, BOTH SIDES OF PENETRATION THRU WALL.



UPPER-LEVEL FLOOR PLAN 1
1/8" = 1'-0"

PLUMWOOD TERRACE - RECONSTRUCTION
URBANDALE, IOWA

PROJECT NO.:	10113
DATE ISSUED:	8-31-10
REVISIONS:	
TITLE:	UPPER-LEVEL FLOOR PLAN
SHEET:	A1.3